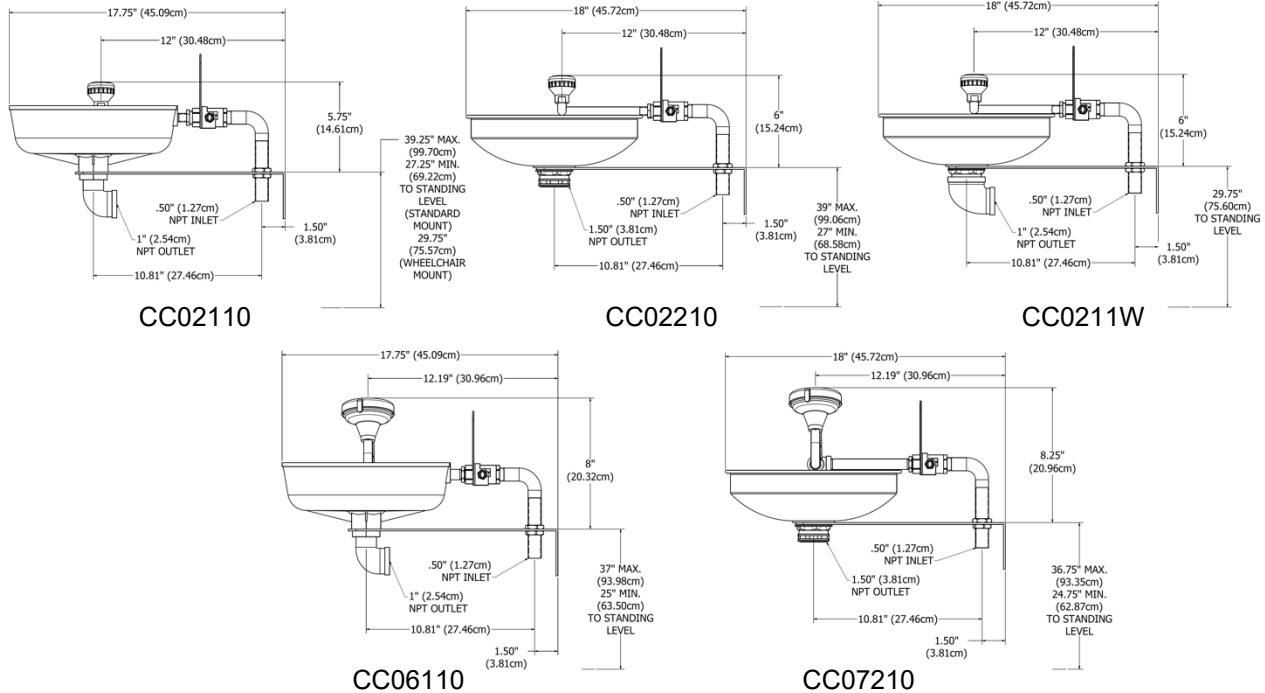


PRODUCT DESCRIPTION

Emergency Eye/Facwash assemblies designed for supply pipe or wall mount in areas where people may come into contact with hazardous materials.



ASSEMBLY AND INSTALLATION INSTRUCTIONS

NOTE: Use thread sealant on all joints except as noted.

1. Follow the illustrations below in Figures 2 and 3 for recommended assembly order for the specific models.
2. The mounting bracket must be attached to the wall using the above recommendations for specific wall types. See below for the recommended heights.
 - a. CC02110 – The maximum height for the top of the mounting bracket for this model is 39.25" (99.70cm). The minimum height for this model is 27.25" (69.22cm). If the model is required to be ADA compliant, the minimum height must be increased to 29.75" (75.57cm) to accommodate a wheelchair bound user.
 - b. CC02210 – The maximum height for this model is 39" (99.06cm) and the minimum is 27" (68.58cm).
 - c. CC0221W – This model is specifically designed to be ADA compliant, therefore this model must be installed so that the top of the mounting bracket is at least 29.75" (75.57cm).
 - d. CC06110 – The maximum height for this model is 37" (93.98cm) and the minimum is 25" (63.50cm).
 - e. CC07210 – The maximum height for this model is 36.75" (93.35cm) and the minimum is 24.75" (62.87cm)
 - f. NOTE: All measurements above are measured from standing level.

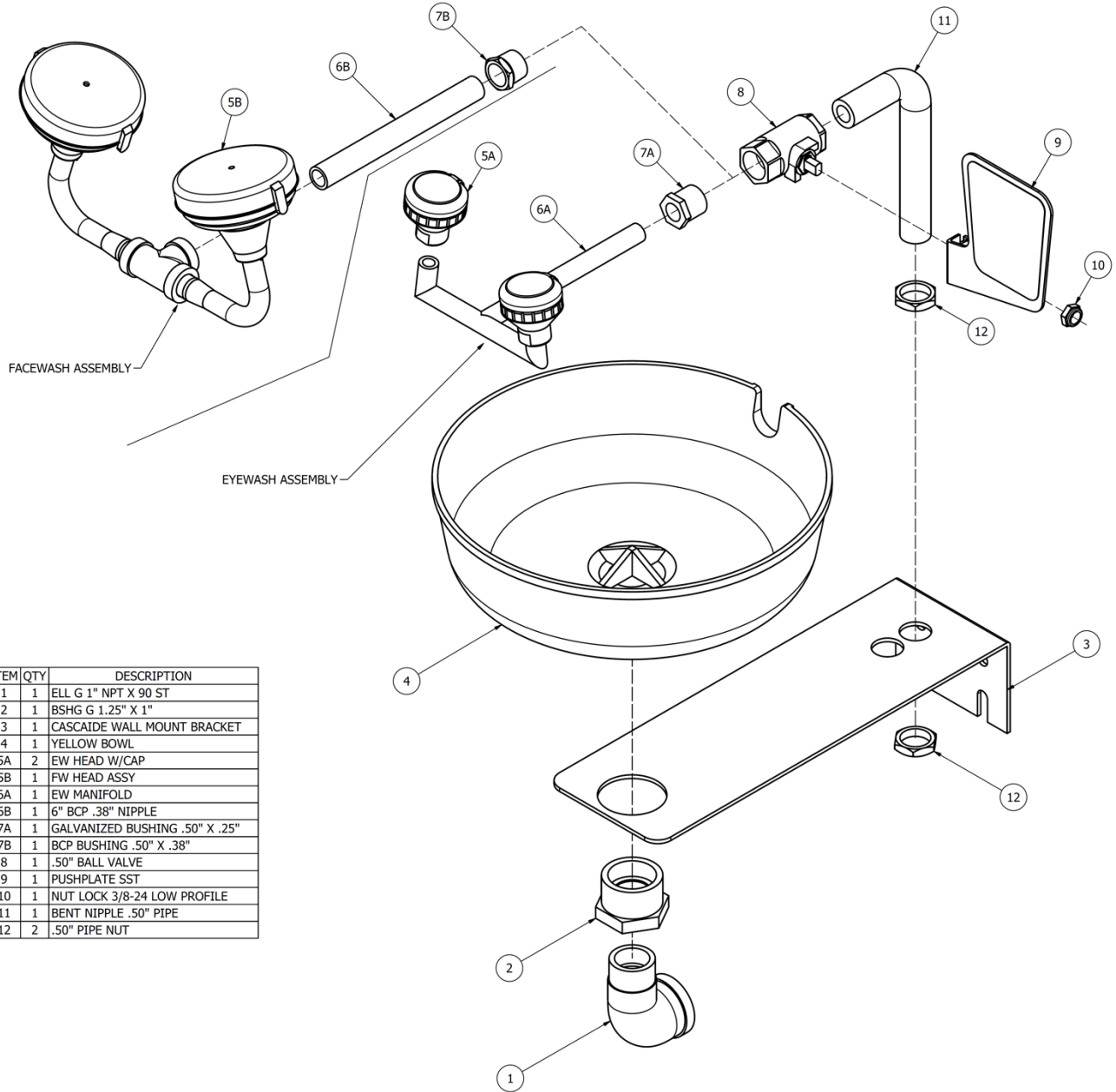
CAUTION: CHECK FOR ADEQUATE WALL STRENGTH

ATTACHMENT TO WALL (if applicable) **NOTE: Mounting hardware is not included**

- Concrete Block:** Use four (4) ¼" dia. toggle screws.
- Concrete:** Use four (4) ¼" dia. expansion anchors or equal
- Stud:** Cut piece of wood (1" x 8"). Wood should be long enough to bridge between wall studs. Fasten wood to existing studs, then attach bracket to wood using four (4) ¼" dia. lag screws.

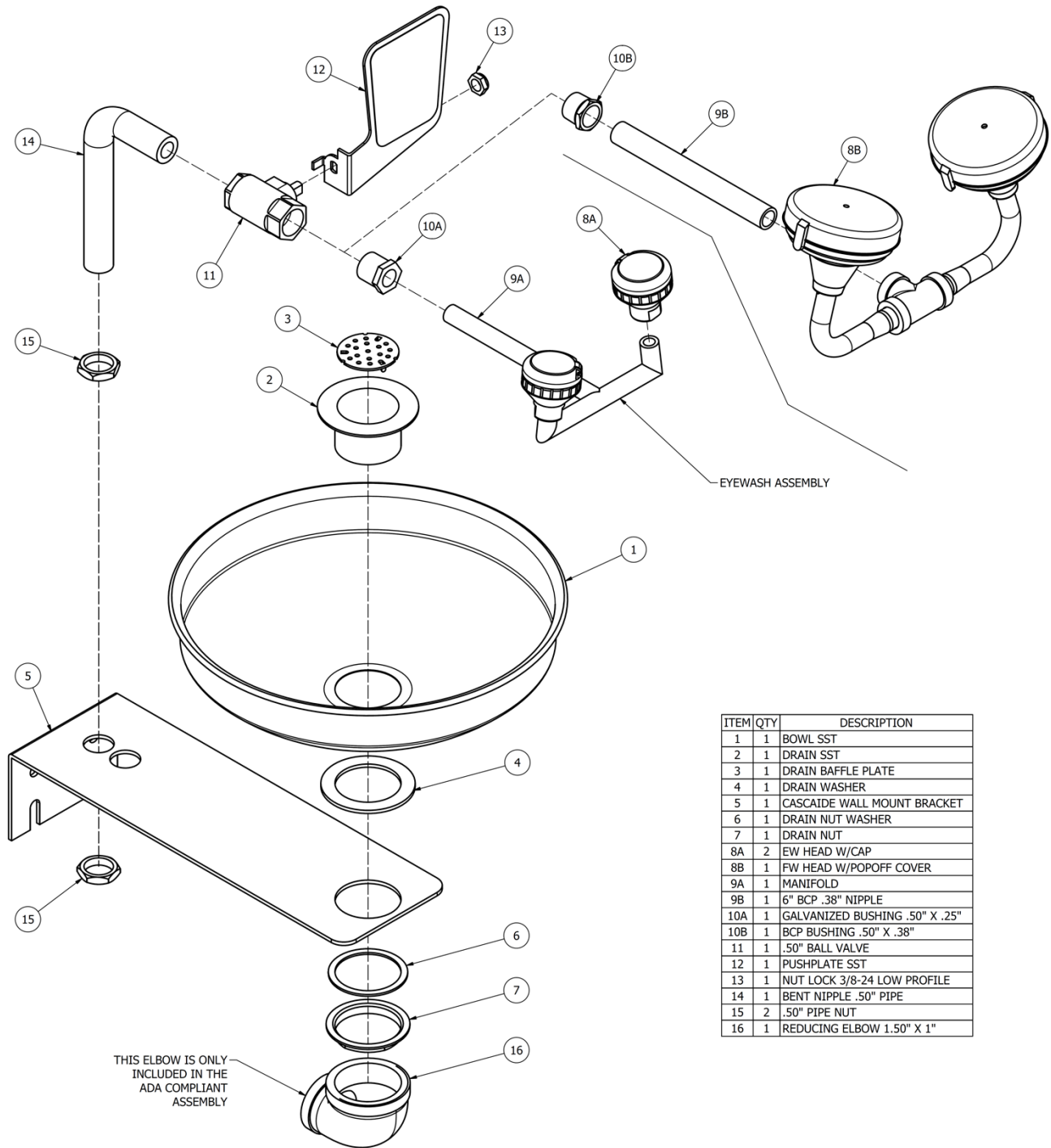
Test unit for leaks and for proper water flow pattern by activating valve to open position using push plate. (Recommended maximum dynamic water pressure 80 psi / minimum dynamic water pressure 30 psi)

FIGURE 2: CC02110/CC06110 CASCAIDE WALLMOUNT PLASTIC BOWL 2.4 GPM EYEWASH/8 GPM FACEWASH



ITEM	QTY	DESCRIPTION
1	1	ELL G 1" NPT X 90 ST
2	1	BSHG G 1.25" X 1"
3	1	CASCAIDE WALL MOUNT BRACKET
4	1	YELLOW BOWL
5A	2	EW HEAD W/CAP
5B	1	FW HEAD ASSY
6A	1	EW MANIFOLD
6B	1	6" BCP .38" NIPPLE
7A	1	GALVANIZED BUSHING .50" X .25"
7B	1	BCP BUSHING .50" X .38"
8	1	.50" BALL VALVE
9	1	PUSHPLATE SST
10	1	NUT LOCK 3/8-24 LOW PROFILE
11	1	BENT NIPPLE .50" PIPE
12	2	.50" PIPE NUT

FIGURE 3: CC02210/CC0221W/CC07210 CASCAIDE WALLMOUNT SST BOWL 2.4 GPM EYEWASH/8 GPM FACEWASH



ITEM	QTY	DESCRIPTION
1	1	BOWL SST
2	1	DRAIN SST
3	1	DRAIN BAFFLE PLATE
4	1	DRAIN WASHER
5	1	CASCAIDE WALL MOUNT BRACKET
6	1	DRAIN NUT WASHER
7	1	DRAIN NUT
8A	2	EW HEAD W/CAP
8B	1	FW HEAD W/POPOFF COVER
9A	1	MANIFOLD
9B	1	6" BCP .38" NIPPLE
10A	1	GALVANIZED BUSHING .50" X .25"
10B	1	BCP BUSHING .50" X .38"
11	1	.50" BALL VALVE
12	1	PUSHPLATE SST
13	1	NUT LOCK 3/8-24 LOW PROFILE
14	1	BENT NIPPLE .50" PIPE
15	2	.50" PIPE NUT
16	1	REDUCING ELBOW 1.50" X 1"

Assemble components in order based on sequence numbers provided

OPERATION & MAINTENANCE

- 1) Plumbed units shall be activated weekly to flush lines and verify proper flow pattern and volume.
- 2) Test records should be maintained verifying compliance with testing procedures.
- 3) Some chemical vapors or liquids may damage or soften plastic materials. Precaution should be taken to determine compatibility prior to installation.

GENERAL INFORMATION

Following are requirements of ANSI Z358.1 for Emergency Eyewash and Shower Equipment. A complete copy of this standard may be purchased from the International Safety Equipment Association.

- 1) Unit shall be installed in accordance with the manufacturer's instructions and acceptable plumbing practices.
- 2) The eye/facewash shall be positioned with the water nozzles between 83.82cm (33 inches) and 114.30cm (45 inches) from the floor and 15.24cm (6 inches) minimum from the wall or nearest obstruction.
- 3) The unit shall be connected to a system capable of supplying adequate flushing fluid to meet the flow requirements. The supply line shall provide an uninterrupted supply of potable water at recommended minimum 0.207 megapascal (30 pounds per square inch) and maximum 0.552 megapascal (80 pounds per square inch) of flow pressure.
- 4) Where the possibility of freezing conditions exists, equipment shall be protected from freezing or freeze-protected equipment shall be installed.
- 5) When the unit is installed, it shall be tested in accordance with the following procedures:
 - a. With the unit correctly connected to the water source and the valve(s) closed, visually check the piping connection for leaks.
 - b. Open the valve to the full open position. The valve shall remain open without requiring further use of the operator's hands.
 - c. With the valve in the "full on" position, measure the flushing fluid flow pattern with the use of a test gauge to determine a suitable eyewash pattern as required by ANSI standards. Determine that both eyes can be irrigated simultaneously at a velocity low enough not to be injurious to the user.
- 6) Eyewash units shall be in accessible locations that require no more than 10 seconds travel time from the farthest hazard.
- 7) Each unit location shall be identified with a highly visible sign. The area around the unit shall be well lit.
- 8) Plumbed units shall be inspected annually for proper operation to ensure compliance to ANSI Z358.1 standard.

TRAINING

All employees who might be exposed to hazardous material shall be instructed in the location and proper use of emergency shower and eye/facewash units. Experiences have shown that initial first-aid treatment for irritates should be to wash the eyes and face for 15 minutes prior to medical treatment. It is important to hold the eyelids open and roll the eyes so water will flow on all surfaces and in the folds surrounding the eyes.

PROPOSITION 65

WARNING: This product can expose you to BPA, which is known to the State of California to cause birth defects or other reproductive harm. For more information go to www.P65Warnings.ca.gov.

WARRANTY STATEMENT

THE SELLER HEREBY DISCLAIMS ALL WARRANTIES EXPRESSED OR IMPLIED INCLUDING BUT NOT LIMITED TO WARRANTIES OF MERCHANTABILITY, FITNESS FOR A PARTICULAR PURPOSE, AND NON-INFRINGEMENT OF THIRD-PARTY RIGHTS, EXCEPT AS HEREINAFTER PROVIDED.

The Seller warrants that for one year from the date of purchase of any of the Seller's products, the product will be free of defects in materials and workmanship if properly used and cared for or cleaned under normal conditions in accordance with the Seller's use and care instructions and properly installed, if applicable, in accordance with the Seller's installation instructions. With respect to the product, the Seller's only obligation and purchaser's exclusive remedy under this warranty is to repair or replace such product; provided that:

1. The Seller is notified of the defect within one year of shipment, and
2. The product is determined by the Seller to be defective.

The Seller requires proof of original ownership as proof of warranty coverage, and the Seller must receive any claim under this Limited Warranty within one year of purchase of the product.

NOTWITHSTANDING ANYTHING TO THE CONTRARY CONTAINED HEREIN, THE SELLER SHALL NOT BE LIABLE FOR LOSS, DAMAGE, OR EXPENSE ARISING DIRECTLY OR INDIRECTLY AS A CONSEQUENCE OF USE OF THE EQUIPMENT WITH OTHER PRODUCTS OR FROM ANY OTHER CAUSE, INCLUDING ANY CONSEQUENTIAL, INCIDENTAL, SPECIAL OR EXEMPLARY DAMAGES, EXCEPT FOR THE SELLER'S OBLIGATION TO REPAIR OR REPLACE DEFECTIVE PRODUCTS AS EXPRESSLY PROVIDED IN THIS STATEMENT.

Replacement parts purchased from the Seller are warranted for one year following the shipment of such replacement part, or until the expiration of the warranty period for the product, whichever is less. No warranty is given in connection with products that are altered without the Seller's expressed written consent. The same warranty limitations and the obligations of the Seller as set out herein above shall apply to replacement parts.

The Seller's total liability arising out of this warranty (including, but not limited to, warranty claims) regardless of forum and regardless of whether such action or claim is based on tort, contract or otherwise will not exceed the total purchase price of the product.

